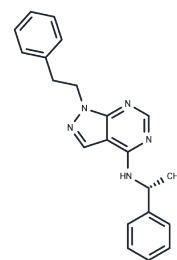


CLM3

Chemical Properties

| | |
|-------------------|---|
| CAS No. : | 1312024-59-1 |
| Formula: | C ₂₁ H ₂₁ N ₅ |
| Molecular Weight: | 343.43 |
| Storage: | Powder: -20°C for 3 years In solvent: -80°C for 1 year Actual storage temperature shall be subject to the COA. |



Biological Description

| | |
|---------------|---|
| Description | CLM3, a pyrazolopyrimidine derivative, functions as a multitargeted tyrosine kinase inhibitor. It exhibits antiproliferative and proapoptotic activities on endothelial and cancer cells, activities that are synergistically enhanced by SN38. The primary mechanism of action for CLM3 involves the inhibition of phosphorylation in tyrosine kinases such as VEGFR-2, EGFR, and RET, along with their associated signaling pathways. |
| Targets(IC50) | Apoptosis,EGFR,c-RET,VEGFR |
| In vitro | CLM3 (0-100 μM, 72 h) significantly reduces the levels of phosphorylated VEGFR-2, phosphorylated EGFR, and phosphorylated RET in activated endothelial and cancer cells. Additionally, CLM3 (0-100 μM, 72 h) markedly inhibits the expression of the cyclin D1 gene and decreases the intracellular concentration of cyclin D1 protein in both endothelial and cancer cells. |

Preparing Stock Solutions

| | 1mg | 5mg | 10mg |
|-------|-----------|-----------|-----------|
| 1 mM | 2.9118 mL | 14.559 mL | 29.118 mL |
| 5 mM | 0.5824 mL | 2.9118 mL | 5.8236 mL |
| 10 mM | 0.2912 mL | 1.4559 mL | 2.9118 mL |
| 50 mM | 0.0582 mL | 0.2912 mL | 0.5824 mL |

Please select the appropriate solvent to prepare the stock solution, according to the solubility of the product in different solvents. Please use it as soon as possible.

Note: The dilution table applies only to solid products. For liquid products, please calculate the stock solution based on the stated concentration and/or density.

Inhibitor · Natural Compounds · Compound Libraries · Recombinant Proteins

This product is for Research Use Only · Not for Human or Veterinary or Therapeutic Use

Tel:781-999-4286 E_mail:info@targetmol.com Address:34 Washington Street,Wellesley Hills,MA 02481