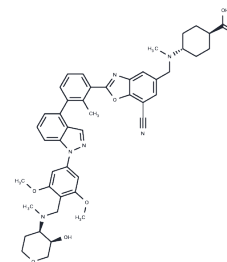


PD-L1-IN-7

## Chemical Properties

CAS No. : 3024733-03-4  
 Formula: C<sub>46</sub>H<sub>50</sub>N<sub>6</sub>O<sub>7</sub>  
 Molecular Weight: 798.93  
 Storage: Powder: -20°C for 3 years | In solvent: -80°C for 1 year  
 Actual storage temperature shall be subject to the COA.



## Biological Description

Description	PD-L1-IN-7 (compound CB31) serves as a PD-L1 inhibitor, effectuating PD-L1 internalization and retention within cells. It restrains the PD-1/PD-L1 interaction (IC <sub>50</sub> : 0.2 nM), alters glycosylation patterns, and facilitates PD-L1 degradation. Additionally, PD-L1-IN-7 enhances T cell infiltration, boosts T cell function, and augments the capacity to destroy tumor cells.
Targets(IC <sub>50</sub> )	PD-1/PD-L1

## Preparing Stock Solutions

	1mg	5mg	10mg
1 mM	1.2517 mL	6.2584 mL	12.5167 mL
5 mM	0.2503 mL	1.2517 mL	2.5033 mL
10 mM	0.1252 mL	0.6258 mL	1.2517 mL
50 mM	0.025 mL	0.1252 mL	0.2503 mL

Please select the appropriate solvent to prepare the stock solution, according to the solubility of the product in different solvents. Please use it as soon as possible.

Note: The dilution table applies only to solid products. For liquid products, please calculate the stock solution based on the stated concentration and/or density.

Inhibitor · Natural Compounds · Compound Libraries · Recombinant Proteins

This product is for Research Use Only · Not for Human or Veterinary or Therapeutic Use

Tel: 781-999-4286 E\_mail: info@targetmol.com Address: 34 Washington Street, Wellesley Hills, MA 02481