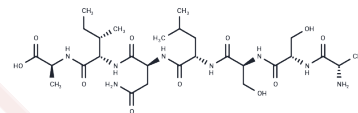


Skeletal muscle-targeted peptide MSP

Chemical Properties

CAS No. :	216763-24-5
Formula:	C ₂₈ H ₅₀ N ₈ O ₁₁
Molecular Weight:	674.74
Storage:	Keep away from moisture Powder: -20°C for 3 years In solvent: -80°C for 1 year <small>Actual storage temperature shall be subject to the COA.</small>



Biological Description

Description	Skeletal muscle-targeted peptide MSP, a muscle-targeting peptide (MTP) composed of seven amino acids (ASSLNIA), selectively binds to various ligands in muscle tissues. This targeting capability makes it a useful tool in researching cardiac and skeletal muscle diseases.
Targets(IC50)	Others

Preparing Stock Solutions

	1mg	5mg	10mg
1 mM	1.4821 mL	7.4103 mL	14.8205 mL
5 mM	0.2964 mL	1.4821 mL	2.9641 mL
10 mM	0.1482 mL	0.741 mL	1.4821 mL
50 mM	0.0296 mL	0.1482 mL	0.2964 mL

Please select the appropriate solvent to prepare the stock solution, according to the solubility of the product in different solvents. Please use it as soon as possible.

Note: The dilution table applies only to solid products. For liquid products, please calculate the stock solution based on the stated concentration and/or density.

Inhibitor · Natural Compounds · Compound Libraries · Recombinant Proteins

This product is for Research Use Only · Not for Human or Veterinary or Therapeutic Use

Tel: 781-999-4286 E_mail: info@targetmol.com Address: 34 Washington Street, Wellesley Hills, MA 02481