

## Alamandine

## Chemical Properties

CAS No. : 1176306-10-7

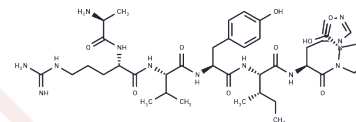
Formula: C40H62N12O9

Molecular Weight: 855.011

Keep away from moisture

Storage: Powder: -20°C for 3 years | In solvent: -80°C for 1 year

Actual storage temperature shall be subject to the COA.



## Biological Description

Description	Alamandine can be formed from angiotensin A by action of ACE-2 or directly from angiotensin-(1-7) by decarboxylation of its aspartate residue. The angiotensin A analog produces effects resembling those of Ang II (1-7). However, it acts independently of the two known vasodilators receptors of the RAS (Mas and angiotensin II type 2). To produce its effects, alamandine binds to the Mas-related receptor, MrgD. A novel orally active formulation of alamandine produced a long-term antihypertensive effect in spontaneously hypertensive rats and cardioprotective effects. These novel findings will be helpful for developing a new understanding of the RAS, a key regulator of blood pressure and fluid balance. The heptapeptide could serve as a model peptide, e.g. in the development and evaluation of analytical methods.
Targets(IC50)	RAAS,Angiotensin-converting Enzyme (ACE)

## Solubility Information

Solubility	DMSO: Soluble (< 1 mg/ml refers to the product slightly soluble or insoluble)
------------	--

### Preparing Stock Solutions

---

	<b>1mg</b>	<b>5mg</b>	<b>10mg</b>
1 mM	1.1696 mL	5.8479 mL	11.6958 mL
5 mM	0.2339 mL	1.1696 mL	2.3392 mL
10 mM	0.117 mL	0.5848 mL	1.1696 mL
50 mM	0.0234 mL	0.117 mL	0.2339 mL

---

Please select the appropriate solvent to prepare the stock solution, according to the solubility of the product in different solvents. Please use it as soon as possible.

Note: The dilution table applies only to solid products. For liquid products, please calculate the stock solution based on the stated concentration and/or density.

**Inhibitor · Natural Compounds · Compound Libraries · Recombinant Proteins**

This product is for Research Use Only · Not for Human or Veterinary or Therapeutic Use

Tel:781-999-4286 E\_mail:info@targetmol.com Address:34 Washington Street,Wellesley Hills,MA 02481