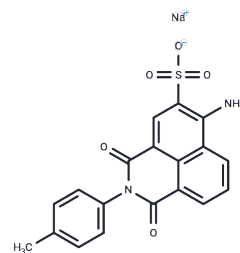


Brilliant sulfaflavine

Chemical Properties

CAS No. :	2391-30-2
Formula:	C ₁₉ H ₁₃ N ₂ NaO ₅ S
Molecular Weight:	404.37
Storage:	Powder: -20°C for 3 years In solvent: -80°C for 1 year Actual storage temperature shall be subject to the COA.



Biological Description

Description	Brilliant Sulfaflavine is used as fluorescent tracers. It is used to study the application rate of foliar fungicides when applied to soybeans for the control of rust.
Targets(IC50)	Others

Solubility Information

Solubility	DMSO: Soluble, (< 1 mg/ml refers to the product slightly soluble or insoluble)
------------	---

Preparing Stock Solutions

	1mg	5mg	10mg
1 mM	2.473 mL	12.3649 mL	24.7298 mL
5 mM	0.4946 mL	2.473 mL	4.946 mL
10 mM	0.2473 mL	1.2365 mL	2.473 mL
50 mM	0.0495 mL	0.2473 mL	0.4946 mL

Please select the appropriate solvent to prepare the stock solution, according to the solubility of the product in different solvents. Please use it as soon as possible.

Note: The dilution table applies only to solid products. For liquid products, please calculate the stock solution based on the stated concentration and/or density.

Reference

Shapiro HM, Schildkraut ER, Curbelo R, Laird CW, Turner B, Hirschfeld T. Combined blood cell counting and classification with fluorochrome stains and flow instrumentation. *J Histochem Cytochem.* 1976 Jan;24(1):396-401. PubMed PMID: 56391.

Curtis SK, Cowden RR. Effects of preparation and fixation on three quantitative fluorescent cytochemical procedures. *Histochemistry.* 1980;68(1):29-38. PubMed PMID: 6157658.

Curtis SK, Cowden RR. Microfluorometric estimates of proteins associated with murine hepatocyte and thymocyte nuclei, residual structures, and nuclear matrix derivatives. *Histochemistry.* 1985;82(4):331-9. PubMed PMID: 4008276.

Freeman DA, Crissman HA. Evaluation of six fluorescent protein stains for use in flow microfluorometry. *Stain Technol.* 1975 Jul;50(4):279-84. PubMed PMID: 52920.

Inhibitor · Natural Compounds · Compound Libraries · Recombinant Proteins

This product is for Research Use Only · Not for Human or Veterinary or Therapeutic Use

Tel:781-999-4286 E_mail:info@targetmol.com Address:34 Washington Street,Wellesley Hills,MA 02481