

LL-K12-18

Chemical Properties

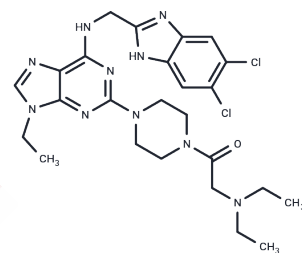
CAS No. :

Formula: C₂₅H₃₂Cl₂N₁₀O

Molecular Weight: 559.49

Storage: Powder: -20°C for 3 years | In solvent: -80°C for 1 year

Actual storage temperature shall be subject to the COA.



Biological Description

Description	LL-K12-18 is a dual-site molecular glue that enhances protein-protein interactions (PPIs) between CDK12-DDB1 complexes thereby promoting the degradation of Cyclin K. It potently inhibits tumor cell gene transcription and anti-proliferation.
Targets(IC50)	CDK,Molecular Glues,PROTAC Linker
In vitro	LL-K12-18 is currently a very potent degrader of cyclin K (EC50 value is 0.37 nM). [1]

Preparing Stock Solutions

	1mg	5mg	10mg
1 mM	1.7873 mL	8.9367 mL	17.8734 mL
5 mM	0.3575 mL	1.7873 mL	3.5747 mL
10 mM	0.1787 mL	0.8937 mL	1.7873 mL
50 mM	0.0357 mL	0.1787 mL	0.3575 mL

Please select the appropriate solvent to prepare the stock solution, according to the solubility of the product in different solvents. Please use it as soon as possible.

Note: The dilution table applies only to solid products. For liquid products, please calculate the stock solution based on the stated concentration and/or density.

Reference

Zhang Z, et al. Dual-site molecular glues for enhancing protein-protein interactions of the CDK12-DDB1 complex. Nat Commun. 2024 Aug 1;15(1):6477.

Inhibitor · Natural Compounds · Compound Libraries · Recombinant Proteins

This product is for Research Use Only· Not for Human or Veterinary or Therapeutic Use

Tel:781-999-4286 E_mail:info@targetmol.com Address:34 Washington Street,Wellesley Hills,MA 02481