

SOD1 (147-153) human

Chemical Properties

CAS No. : 2760733-01-3

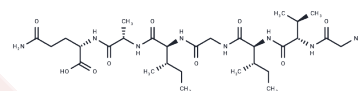
Formula: C29H52N8O9

Molecular Weight: 656.77

Keep away from moisture

Storage: Powder: -20°C for 3 years | In solvent: -80°C for 1 year

Actual storage temperature shall be subject to the COA.



Biological Description

Description	SOD1 (147-153) human, a peptide segment within Cu/Zn superoxide dismutase (SOD1), exhibits a high propensity for forming amyloid fibrils. This segment is involved in the formation of aggregates and serves as a common molecular determinant in both familial amyotrophic lateral sclerosis (fALS) and sporadic amyotrophic lateral sclerosis (sALS).
-------------	---

Preparing Stock Solutions

	1mg	5mg	10mg
1 mM	1.5226 mL	7.613 mL	15.226 mL
5 mM	0.3045 mL	1.5226 mL	3.0452 mL
10 mM	0.1523 mL	0.7613 mL	1.5226 mL
50 mM	0.0305 mL	0.1523 mL	0.3045 mL

Please select the appropriate solvent to prepare the stock solution, according to the solubility of the product in different solvents. Please use it as soon as possible.

Note: The dilution table applies only to solid products. For liquid products, please calculate the stock solution based on the stated concentration and/or density.

Inhibitor · Natural Compounds · Compound Libraries · Recombinant Proteins

This product is for Research Use Only · Not for Human or Veterinary or Therapeutic Use

Tel: 781-999-4286 E_mail: info@targetmol.com Address: 34 Washington Street, Wellesley Hills, MA 02481