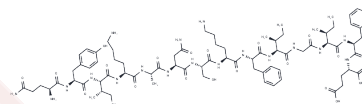


## Tetanus toxin peptide

## Chemical Properties

CAS No. :	143651-00-7
Formula:	C79H120N18O21
Molecular Weight:	1657.91
Storage:	Keep away from moisture Powder: -20°C for 3 years   In solvent: -80°C for 1 year <small>Actual storage temperature shall be subject to the COA.</small>



## Biological Description

Description	Tetanus toxin peptide, a specific peptide segment isolated from the toxin produced by Clostridium tetani, serves as an immunogen in mice to induce diabetes. It is also utilized in the research of Type 1 diabetes.
-------------	--

## Preparing Stock Solutions

	1mg	5mg	10mg
1 mM	0.6032 mL	3.0158 mL	6.0317 mL
5 mM	0.1206 mL	0.6032 mL	1.2063 mL
10 mM	0.0603 mL	0.3016 mL	0.6032 mL
50 mM	0.0121 mL	0.0603 mL	0.1206 mL

Please select the appropriate solvent to prepare the stock solution, according to the solubility of the product in different solvents. Please use it as soon as possible.

Note: The dilution table applies only to solid products. For liquid products, please calculate the stock solution based on the stated concentration and/or density.

**Inhibitor · Natural Compounds · Compound Libraries · Recombinant Proteins**

This product is for Research Use Only · Not for Human or Veterinary or Therapeutic Use

Tel: 781-999-4286 E\_mail: info@targetmol.com Address: 34 Washington Street, Wellesley Hills, MA 02481