

KWWCRW

Chemical Properties

CAS No. : 292148-25-5

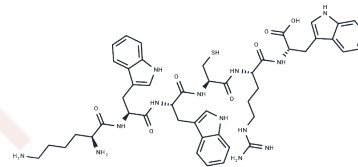
Formula: C48H61N13O7S

Molecular Weight: 964.15

Keep away from moisture

Storage: Powder: -20°C for 3 years | In solvent: -80°C for 1 year

Actual storage temperature shall be subject to the COA.



Biological Description

Description

KWWCRW is an inhibitory peptide targeting the Holliday junction, exhibiting anticancer activity. It inhibits homologous recombination repair (HDR) during DNA repair by binding to the intermediate structures of the reactive Holliday junction and preventing their resolution. Additionally, KWWCRW inhibits site-specific recombination in vitro in bacteriophages.

Preparing Stock Solutions

	1mg	5mg	10mg
1 mM	1.0372 mL	5.1859 mL	10.3718 mL
5 mM	0.2074 mL	1.0372 mL	2.0744 mL
10 mM	0.1037 mL	0.5186 mL	1.0372 mL
50 mM	0.0207 mL	0.1037 mL	0.2074 mL

Please select the appropriate solvent to prepare the stock solution, according to the solubility of the product in different solvents. Please use it as soon as possible.

Note: The dilution table applies only to solid products. For liquid products, please calculate the stock solution based on the stated concentration and/or density.

Inhibitor · Natural Compounds · Compound Libraries · Recombinant Proteins

This product is for Research Use Only · Not for Human or Veterinary or Therapeutic Use

Tel: 781-999-4286

E_mail: info@targetmol.com

Address: 34 Washington Street, Wellesley Hills, MA 02481