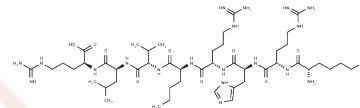


[Nle20] H4 peptide (16–23)

Chemical Properties

| | |
|-------------------|---|
| CAS No. : | 2042178-19-6 |
| Formula: | C47H88N20O9 |
| Molecular Weight: | 1077.33 |
| Storage: | Powder: -20°C for 3 years In solvent: -80°C for 1 year Actual storage temperature shall be subject to the COA. |



Biological Description

| | |
|-------------|--|
| Description | [Nle20] H4 peptide (16–23) is a potent inhibitor of the histone methyltransferase SETD8, exhibiting strong inhibitory activity ($K_d = 0.14 \mu\text{M}$) by competing for the substrate binding site on SETD8, thereby inhibiting its methylation of histone H4. This peptide can serve as a lead compound in anticancer therapy. |
|-------------|--|

Preparing Stock Solutions

| | 1mg | 5mg | 10mg |
|-------|-----------|-----------|-----------|
| 1 mM | 0.9282 mL | 4.6411 mL | 9.2822 mL |
| 5 mM | 0.1856 mL | 0.9282 mL | 1.8564 mL |
| 10 mM | 0.0928 mL | 0.4641 mL | 0.9282 mL |
| 50 mM | 0.0186 mL | 0.0928 mL | 0.1856 mL |

Please select the appropriate solvent to prepare the stock solution, according to the solubility of the product in different solvents. Please use it as soon as possible.

Note: The dilution table applies only to solid products. For liquid products, please calculate the stock solution based on the stated concentration and/or density.

Inhibitor · Natural Compounds · Compound Libraries · Recombinant Proteins

This product is for Research Use Only · Not for Human or Veterinary or Therapeutic Use

Tel: 781-999-4286 E_mail: info@targetmol.com Address: 34 Washington Street, Wellesley Hills, MA 02481