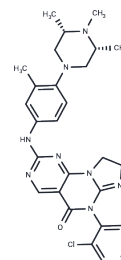


WEE1-IN-10

Chemical Properties

CAS No. :	2226938-19-6
Formula:	C ₂₈ H ₃₀ Cl ₂ N ₈ O
Molecular Weight:	565.5
Storage:	Store at low temperature Powder: -20°C for 3 years In solvent: -80°C for 1 year <i>Actual storage temperature shall be subject to the COA.</i>



Biological Description

Description	WEE1-IN-10 (compound 77) is a Wee1 kinase inhibitor that inhibits the growth of LOVO cells (IC ₅₀ =0.524 μM) and can be used to study diseases caused by abnormal Wee1 activity, such as pancreatic cancer, malignant melanoma, and malignant glioma.
Targets(IC ₅₀)	Wee1
In vitro	WEE1-IN-10 (compound 77) is a Wee1 kinase inhibitor that effectively suppresses the growth of LOVO cells, with an IC ₅₀ of 0.524μM. WEE1-IN-10 is a valuable compound for studying diseases linked to dysregulated Wee1 activity[1].

Preparing Stock Solutions

	1mg	5mg	10mg
1 mM	1.7683 mL	8.8417 mL	17.6835 mL
5 mM	0.3537 mL	1.7683 mL	3.5367 mL
10 mM	0.1768 mL	0.8842 mL	1.7683 mL
50 mM	0.0354 mL	0.1768 mL	0.3537 mL

Please select the appropriate solvent to prepare the stock solution, according to the solubility of the product in different solvents. Please use it as soon as possible.

Note: The dilution table applies only to solid products. For liquid products, please calculate the stock solution based on the stated concentration and/or density.

Reference

CAI Suixiong, et al. 8,9-dihydroimidazole[1,2-a]pyrimido[5,4-e]pyrimidine-5(6h)-ketone compound. Patent. WO2018090939A1.

Inhibitor · Natural Compounds · Compound Libraries · Recombinant Proteins

This product is for Research Use Only · Not for Human or Veterinary or Therapeutic Use

Tel:781-999-4286 E_mail:info@targetmol.com Address:34 Washington Street,Wellesley Hills,MA 02481