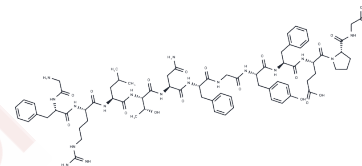


SP1

Chemical Properties

CAS No. : 858602-44-5
Formula: C72H97N17O19
Molecular Weight: 1504.64
Storage: Keep away from moisture
Powder: -20°C for 3 years | In solvent: -80°C for 1 year
Actual storage temperature shall be subject to the COA.



Biological Description

Description	SP1 is a peptide encoded by the MF α 1 gene, originating from the mating pheromone of <i>Candida albicans</i> . It can induce the cessation of growth in cells at the mating-type locus MTL α of <i>Candida albicans</i> . SP1 has potential applications in research focused on the prevention and treatment of <i>Candida albicans</i> infections.
-------------	--

Preparing Stock Solutions

	1mg	5mg	10mg
1 mM	0.6646 mL	3.3231 mL	6.6461 mL
5 mM	0.1329 mL	0.6646 mL	1.3292 mL
10 mM	0.0665 mL	0.3323 mL	0.6646 mL
50 mM	0.0133 mL	0.0665 mL	0.1329 mL

Please select the appropriate solvent to prepare the stock solution, according to the solubility of the product in different solvents. Please use it as soon as possible.

Note: The dilution table applies only to solid products. For liquid products, please calculate the stock solution based on the stated concentration and/or density.

Inhibitor · Natural Compounds · Compound Libraries · Recombinant Proteins

This product is for Research Use Only · Not for Human or Veterinary or Therapeutic Use

Tel: 781-999-4286 E_mail: info@targetmol.com Address: 34 Washington Street, Wellesley Hills, MA 02481