

## Pomalidomide-cyclohexane

## Chemical Properties

CAS No. : 2924858-40-0

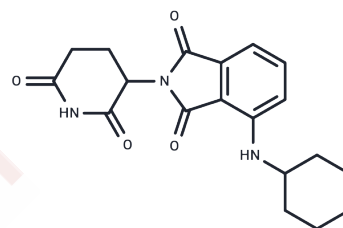
Formula: C<sub>19</sub>H<sub>21</sub>N<sub>3</sub>O<sub>4</sub>

Molecular Weight: 355.39

Keep away from direct sunlight

Storage: Powder: -20°C for 3 years | In solvent: -80°C for 1 year

Actual storage temperature shall be subject to the COA.



## Biological Description

Description

Pomalidomide-cyclohexane is a conjugate of an E3 ubiquitin ligase ligand-linker.

## Preparing Stock Solutions

	1mg	5mg	10mg
1 mM	2.8138 mL	14.0691 mL	28.1381 mL
5 mM	0.5628 mL	2.8138 mL	5.6276 mL
10 mM	0.2814 mL	1.4069 mL	2.8138 mL
50 mM	0.0563 mL	0.2814 mL	0.5628 mL

Please select the appropriate solvent to prepare the stock solution, according to the solubility of the product in different solvents. Please use it as soon as possible.

Note: The dilution table applies only to solid products. For liquid products, please calculate the stock solution based on the stated concentration and/or density.

Inhibitor · Natural Compounds · Compound Libraries · Recombinant Proteins

This product is for Research Use Only · Not for Human or Veterinary or Therapeutic Use

Tel: 781-999-4286

E\_mail: info@targetmol.com

Address: 34 Washington Street, Wellesley Hills, MA 02481