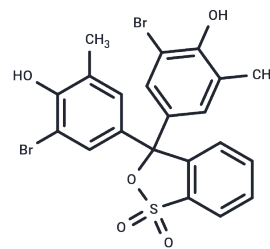


Bromocresol purple

Chemical Properties

CAS No. :	115-40-2
Formula:	C ₂₁ H ₁₆ Br ₂ O ₅ S
Molecular Weight:	540.22
Storage:	Powder: -20°C for 3 years In solvent: -80°C for 1 year Actual storage temperature shall be subject to the COA.



Biological Description

Description	Bromocresol purple, a pH indicator, changes color from yellow to purple as the pH shifts from 5.2 to 6.8. It is also utilized for detecting damaged yeast cell membranes.
Targets(IC50)	Others

Preparing Stock Solutions

	1mg	5mg	10mg
1 mM	1.8511 mL	9.2555 mL	18.511 mL
5 mM	0.3702 mL	1.8511 mL	3.7022 mL
10 mM	0.1851 mL	0.9255 mL	1.8511 mL
50 mM	0.037 mL	0.1851 mL	0.3702 mL

Please select the appropriate solvent to prepare the stock solution, according to the solubility of the product in different solvents. Please use it as soon as possible.

Note: The dilution table applies only to solid products. For liquid products, please calculate the stock solution based on the stated concentration and/or density.

Inhibitor · Natural Compounds · Compound Libraries · Recombinant Proteins

This product is for Research Use Only · Not for Human or Veterinary or Therapeutic Use

Tel: 781-999-4286 E_mail: info@targetmol.com Address: 34 Washington Street, Wellesley Hills, MA 02481