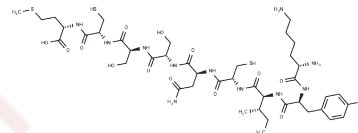


## Peptide 234CM

## Chemical Properties

CAS No. :	155314-25-3
Formula:	C42H69N11O14S3
Molecular Weight:	1048.26
Storage:	Keep away from moisture Powder: -20°C for 3 years   In solvent: -80°C for 1 year <small>Actual storage temperature shall be subject to the COA.</small>



## Biological Description

Description	Peptide 234CM is a peptide featuring isoleucine at position 3, corresponding to the sequence of the codon 234 mutation in p53. This peptide can elicit effective cytotoxic T lymphocytes (CTL) and antitumor immune responses against mutant p53.
-------------	---

## Preparing Stock Solutions

	1mg	5mg	10mg
1 mM	0.954 mL	4.7698 mL	9.5396 mL
5 mM	0.1908 mL	0.954 mL	1.9079 mL
10 mM	0.0954 mL	0.477 mL	0.954 mL
50 mM	0.0191 mL	0.0954 mL	0.1908 mL

Please select the appropriate solvent to prepare the stock solution, according to the solubility of the product in different solvents. Please use it as soon as possible.

Note: The dilution table applies only to solid products. For liquid products, please calculate the stock solution based on the stated concentration and/or density.

**Inhibitor · Natural Compounds · Compound Libraries · Recombinant Proteins**

This product is for Research Use Only · Not for Human or Veterinary or Therapeutic Use

Tel:781-999-4286 E\_mail:info@targetmol.com Address:34 Washington Street,Wellesley Hills,MA 02481