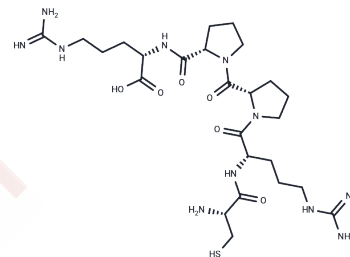


Heart-homing peptide

Chemical Properties

CAS No. :	876460-72-9
Formula:	C ₂₅ H ₄₅ N ₁₁ O ₆ S
Molecular Weight:	627.76
Storage:	Keep away from moisture Powder: -20°C for 3 years In solvent: -80°C for 1 year <small>Actual storage temperature shall be subject to the COA.</small>



Biological Description

Description	Heart-homing peptide, abbreviated as CRPPR, is a linear peptide consisting of arginine-rich sequences. Identified as a cardiac-homing peptide due to its specific ability to bind to cardiac endothelium, CRPPR has been proposed to interact with Cysteine-rich intestinal protein-2 (CRIP-2) as its receptor. Additionally, this peptide is utilized for binding to liposomes.
-------------	----------------------------------------------------------------------------------------------------------------------------------------------------------------------------------------------------------------------------------------------------------------------------------------------------------------------------------------------------------------------------------

Preparing Stock Solutions

	1mg	5mg	10mg
1 mM	1.593 mL	7.9648 mL	15.9297 mL
5 mM	0.3186 mL	1.593 mL	3.1859 mL
10 mM	0.1593 mL	0.7965 mL	1.593 mL
50 mM	0.0319 mL	0.1593 mL	0.3186 mL

Please select the appropriate solvent to prepare the stock solution, according to the solubility of the product in different solvents. Please use it as soon as possible.

Note: The dilution table applies only to solid products. For liquid products, please calculate the stock solution based on the stated concentration and/or density.

Inhibitor · Natural Compounds · Compound Libraries · Recombinant Proteins

This product is for Research Use Only · Not for Human or Veterinary or Therapeutic Use

Tel: 781-999-4286 E_mail: info@targetmol.com Address: 34 Washington Street, Wellesley Hills, MA 02481