

Palmaturbine

Chemical Properties

CAS No. : 16176-68-4

Formula: C₂₀H₂₀NO₄

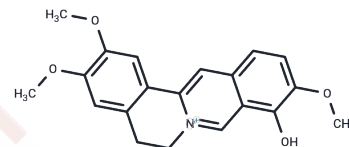
Molecular Weight: 338.38

Storage:

Keep away from moisture, Keep away from direct sunlight

Powder: -20°C for 3 years | In solvent: -80°C for 1 year

Actual storage temperature shall be subject to the COA.



Biological Description

| | |
|---------------|--|
| Description | Palmaturbine Isolated from <i>T. sinensis</i> , Palmaturbine has antitumor activity. |
| Targets(IC50) | Others |

Solubility Information

| | |
|---------------------|---|
| Solubility | DMSO: 3.39 mg/mL (10.02 mM), Sonication is recommended. Chloroform, Dichloromethane, Ethyl Acetate, Acetone, etc.: Soluble, (< 1 mg/ml refers to the product slightly soluble or insoluble) |
| In vivo Formulation | 10% DMSO+40% PEG300+5% Tween 80+45% Saline: 1 mg/mL (2.96 mM), Sonication is recommended. <i>Please add the solvents sequentially, clarifying the solution as much as possible before adding the next one. Dissolve by heating and/or sonication if necessary. Working solution is recommended to be prepared and used immediately. The formulation provided above is for reference purposes only. In vivo formulations may vary and should be modified based on specific experimental conditions.</i> |

Preparing Stock Solutions

| | 1mg | 5mg | 10mg |
|-------|------------|------------|-------------|
| 1 mM | 2.9553 mL | 14.7763 mL | 29.5526 mL |
| 5 mM | 0.5911 mL | 2.9553 mL | 5.9105 mL |
| 10 mM | 0.2955 mL | 1.4776 mL | 2.9553 mL |
| 50 mM | 0.0591 mL | 0.2955 mL | 0.5911 mL |

Please select the appropriate solvent to prepare the stock solution, according to the solubility of the product in different solvents. Please use it as soon as possible.

Note: The dilution table applies only to solid products. For liquid products, please calculate the stock solution based on the stated concentration and/or density.

Inhibitor · Natural Compounds · Compound Libraries · Recombinant Proteins

This product is for Research Use Only · Not for Human or Veterinary or Therapeutic Use

Tel:781-999-4286 E_mail:info@targetmol.com Address:34 Washington Street,Wellesley Hills,MA 02481