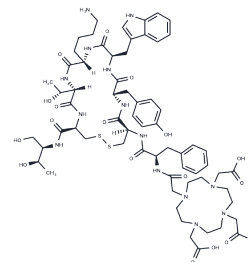


## Edotreotide

## Chemical Properties

CAS No. :	204318-14-9
Formula:	C <sub>65</sub> H <sub>92</sub> N <sub>14</sub> O <sub>18</sub> S <sub>2</sub>
Molecular Weight:	1421.64
Storage:	Keep away from moisture Powder: -20°C for 3 years   In solvent: -80°C for 1 year <small>Actual storage temperature shall be subject to the COA.</small>



## Biological Description

Description	Edotreotide (SMT-487) is an Indicator and Reagent. It also is used in the Diagnosis and Staging of Tumors Expressing Somatostatin Receptors.
Targets(IC50)	Others

## Solubility Information

Solubility	DMSO: Soluble (< 1 mg/ml refers to the product slightly soluble or insoluble)
------------	--

## Preparing Stock Solutions

	1mg	5mg	10mg
1 mM	0.7034 mL	3.5171 mL	7.0341 mL
5 mM	0.1407 mL	0.7034 mL	1.4068 mL
10 mM	0.0703 mL	0.3517 mL	0.7034 mL
50 mM	0.0141 mL	0.0703 mL	0.1407 mL

Please select the appropriate solvent to prepare the stock solution, according to the solubility of the product in different solvents. Please use it as soon as possible.

Note: The dilution table applies only to solid products. For liquid products, please calculate the stock solution based on the stated concentration and/or density.

### Reference

- Baum RP, Singh A, Benešová M, Vermeulen C, Gnesin S, Köster U, Johnston K, Müller D, Senftleben S, Kulkarni HR, Türlér A, Schibli R, Prior JO, van der Meulen NP, Müller C. Clinical evaluation of the radiolanthanide terbium-152: first-in-human PET/CT with (152)Tb-DOTATOC. *Dalton Trans.* 2017 Oct 31;46(42):14638-14646. doi: 10.1039/c7dt01936j. PubMed PMID: 28825750.
- Albers MB, Librizzi D, Lopez CL, Manoharan J, Apitzsch JC, Slater EP, Bollmann C, Kann PH, Bartsch DK. Limited Value of Ga-68-DOTATOC-PET-CT in Routine Screening of Patients with Multiple Endocrine Neoplasia Type 1. *World J Surg.* 2017 Jun;41(6):1521-1527. doi: 10.1007/s00268-017-3907-9. PubMed PMID: 28138732.
- Nakamoto Y, Ishimori T, Sano K, Temma T, Ueda M, Saji H, Togashi K. Clinical efficacy of dual-phase scanning using (68)Ga-DOTATOC-PET/CT in the detection of neuroendocrine tumours. *Clin Radiol.* 2016 Oct;71(10):1069.e1-5. doi: 10.1016/j.crad.2016.04.017. Epub 2016 May 19. PubMed PMID: 27210241.
- Maybody M, Grewal RK, Healey JH, Antonescu CR, Fanchon L, Hwang S, Carrasquillo JA, Kirov A, Farooki A. Ga-68 DOTATOC PET/CT-Guided Biopsy and Cryoablation with Autoradiography of Biopsy Specimen for Treatment of Tumor-Induced Osteomalacia. *Cardiovasc Intervent Radiol.* 2016 Sep;39(9):1352-7. doi: 10.1007/s00270-016-1350-1. Epub 2016 May 5. PubMed PMID: 27150801; PubMed Central PMCID: PMC5483397.

**Inhibitor · Natural Compounds · Compound Libraries · Recombinant Proteins**

This product is for Research Use Only · Not for Human or Veterinary or Therapeutic Use

Tel:781-999-4286 E\_mail:info@targetmol.com Address:34 Washington Street,Wellesley Hills,MA 02481