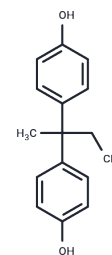


Bisphenol B

Chemical Properties

CAS No. :	77-40-7
Formula:	C ₁₆ H ₁₈ O ₂
Molecular Weight:	242.31
Storage:	Powder: -20°C for 3 years In solvent: -80°C for 1 year Actual storage temperature shall be subject to the COA.



Biological Description

Description	Bisphenol B has a binding affinity for estrogen receptors.
Targets(IC50)	Estrogen Receptor/ERR,Endogenous Metabolite,ROS
In vivo	Exposed to Bisphenol B for chronic duration can induce structural changes in testicular tissue and endocrine alterations in the male reproductive system[1].
Animal Research	Male rats (22 day old) were exposed to water containing 0.1% ethanol for control or different concentrations of BPA and its analogues BPB, BPF and BPS (5, 25 and 50 µg/L) in drinking water for 48 weeks. Results of the present study showed a significant alteration in the gonadosomatic index (GSI) and relative reproductive organs weights. Oxidative stress in the testis was significantly elevated while sperm motility, Daily sperm production (DSP) and number of sperm in epididymis were reduced. Plasma testosterone, LH and FSH concentrations were reduced and estradiol levels were high in 50 µg/L exposed group[1].

Solubility Information

Solubility	DMSO: 22.5 mg/mL (92.86 mM),Sonication is recommended. (< 1 mg/ml refers to the product slightly soluble or insoluble)
In vivo Formulation	10% DMSO+40% PEG300+5% Tween 80+45% Saline: 2 mg/mL (8.25 mM),Sonication is recommended. <i>Please add the solvents sequentially, clarifying the solution as much as possible before adding the next one. Dissolve by heating and/or sonication if necessary. Working solution is recommended to be prepared and used immediately. The formulation provided above is for reference purposes only. In vivo formulations may vary and should be modified based on specific experimental conditions.</i>

Preparing Stock Solutions

	1mg	5mg	10mg
1 mM	4.1269 mL	20.6347 mL	41.2694 mL
5 mM	0.8254 mL	4.1269 mL	8.2539 mL
10 mM	0.4127 mL	2.0635 mL	4.1269 mL
50 mM	0.0825 mL	0.4127 mL	0.8254 mL

Please select the appropriate solvent to prepare the stock solution, according to the solubility of the product in different solvents. Please use it as soon as possible.

Note: The dilution table applies only to solid products. For liquid products, please calculate the stock solution based on the stated concentration and/or density.

Reference

Asad U , Madeeha P , Sarwat J , et al. Impact of low-dose chronic exposure to bisphenol A and its analogue bisphenol B, bisphenol F and bisphenol S on hypothalamo-pituitary-testicular activities in adult rats: A focus on the possible hormonal mode of action[J]. Food and Chemical Toxicology, 2018, 121:24-36.

Ullah A , Pirzada M , Jahan S , et al. Bisphenol A analogues bisphenol B, bisphenol F, and bisphenol S induce oxidative stress, disrupt daily sperm production, and damage DNA in rat spermatozoa: a comparative in vitro and in vivo study[J]. Toxicology and Industrial Health, 2019.

Inhibitor · Natural Compounds · Compound Libraries · Recombinant Proteins

This product is for Research Use Only · Not for Human or Veterinary or Therapeutic Use

Tel:781-999-4286 E_mail:info@targetmol.com Address:34 Washington Street,Wellesley Hills,MA 02481