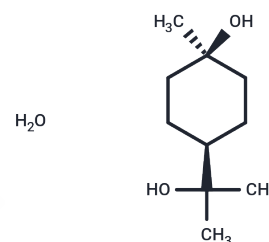


Terpin hydrate

Chemical Properties

CAS No. :	2451-01-6
Formula:	C ₁₀ H ₂₂ O ₃
Molecular Weight:	190.29
Storage:	Powder: -20°C for 3 years In solvent: -80°C for 1 year Actual storage temperature shall be subject to the COA.



Biological Description

Description	Terpin hydrate, a cis-form hydrate, is derived from sources such as oil of turpentine, oregano, thyme, and eucalyptus. It is used as an insect repellent and expectorant. Terpin hydrate(cis-Terpin hydrate) is commonly used to loosen mucus and ease congestion in patients presenting with acute or chronic bronchitis, and related pulmonary conditions. It was popular in the United States since the late nineteenth century, but was removed from marketed medications in the 1990s after the U.S. Food and Drug Administration (FDA) stated that "based on the evidence currently available, there are inadequate data to establish general recognition of the safety and effectiveness of these ingredients". Elixirs of terpin hydrate are still available with a prescription but must be prepared by a compounding pharmacy.
Targets(IC50)	Others

Solubility Information

Solubility	DMSO: 60 mg/mL (315.31 mM),Sonication is recommended. Ethanol: 38 mg/mL (199.7 mM),Sonication is recommended. (< 1 mg/ml refers to the product slightly soluble or insoluble)
In vivo Formulation	10% DMSO+40% PEG300+5% Tween 80+45% Saline: 2 mg/mL (10.51 mM),Sonication is recommended. <i>Please add the solvents sequentially, clarifying the solution as much as possible before adding the next one. Dissolve by heating and/or sonication if necessary. Working solution is recommended to be prepared and used immediately. The formulation provided above is for reference purposes only. In vivo formulations may vary and should be modified based on specific experimental conditions.</i>

Preparing Stock Solutions

	1mg	5mg	10mg
1 mM	5.2551 mL	26.2757 mL	52.5514 mL
5 mM	1.051 mL	5.2551 mL	10.5103 mL
10 mM	0.5255 mL	2.6276 mL	5.2551 mL
50 mM	0.1051 mL	0.5255 mL	1.051 mL

Please select the appropriate solvent to prepare the stock solution, according to the solubility of the product in different solvents. Please use it as soon as possible.

Note: The dilution table applies only to solid products. For liquid products, please calculate the stock solution based on the stated concentration and/or density.

Reference

Bull Am Pharm Assoc. 1946 Mar-Apr;14:41.

Inhibitor · Natural Compounds · Compound Libraries · Recombinant Proteins

This product is for Research Use Only · Not for Human or Veterinary or Therapeutic Use

Tel:781-999-4286 E_mail:info@targetmol.com Address:34 Washington Street,Wellesley Hills,MA 02481