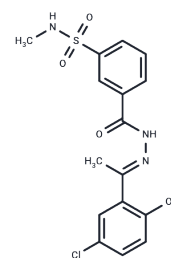


KDM1A-IN-29

## Chemical Properties

CAS No. : 1423715-30-3  
 Formula: C<sub>16</sub>H<sub>16</sub>ClN<sub>3</sub>O<sub>4</sub>S  
 Molecular Weight: 381.83  
 Storage: Keep away from moisture  
 Powder: -20°C for 3 years | In solvent: -80°C for 1 year  
 Actual storage temperature shall be subject to the COA.



## Biological Description

Description	KDM1A-IN-29 is a histone demethylase inhibitor.
Targets(IC <sub>50</sub> )	Histone Demethylase

## Preparing Stock Solutions

	1mg	5mg	10mg
1 mM	2.619 mL	13.0948 mL	26.1897 mL
5 mM	0.5238 mL	2.619 mL	5.2379 mL
10 mM	0.2619 mL	1.3095 mL	2.619 mL
50 mM	0.0524 mL	0.2619 mL	0.5238 mL

Please select the appropriate solvent to prepare the stock solution, according to the solubility of the product in different solvents. Please use it as soon as possible.

Note: The dilution table applies only to solid products. For liquid products, please calculate the stock solution based on the stated concentration and/or density.

## Reference

Hariprasad Vankayalapati, et al. Substituted (E)-N'-(1-phenylethylidene) benzohydrazide analogs as histone demethylase inhibitors. WO2013025805 A1

Inhibitor · Natural Compounds · Compound Libraries · Recombinant Proteins

This product is for Research Use Only · Not for Human or Veterinary or Therapeutic Use

Tel:781-999-4286 E\_mail:info@targetmol.com Address:34 Washington Street,Wellesley Hills,MA 02481