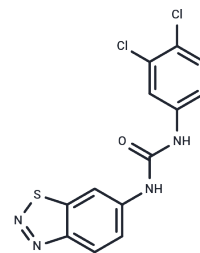


BTdCPU

Chemical Properties

CAS No. :	1257423-87-2
Formula:	C ₁₃ H ₈ Cl ₂ N ₄ O ₅
Molecular Weight:	339.2
Storage:	Powder: -20°C for 3 years In solvent: -80°C for 1 year Actual storage temperature shall be subject to the COA.



Biological Description

Description	BTdCPU is a potent activator of heme-regulated eIF2 α kinase (HRI) . BTdCPU promotes eIF2 α phosphorylation and induced apoptosis in resistant cell.
Targets(IC50)	Apoptosis,PERK,Phosphatase

Solubility Information

Solubility	DMSO: 250 mg/mL (737.03 mM),Sonication is recommended. (< 1 mg/ml refers to the product slightly soluble or insoluble)
In vivo Formulation	10% DMSO+90% Saline: < 10 mg/mL (29.48 mM),Lower concentrations may be soluble, but exact solubility limit is unknown. 10% DMSO+40% PEG300+5% Tween 80+45% Saline: 10 mg/mL (29.48 mM),Solution. <i>Please add the solvents sequentially, clarifying the solution as much as possible before adding the next one. Dissolve by heating and/or sonication if necessary. Working solution is recommended to be prepared and used immediately. The formulation provided above is for reference purposes only. In vivo formulations may vary and should be modified based on specific experimental conditions.</i>

Preparing Stock Solutions

	1mg	5mg	10mg
1 mM	2.9481 mL	14.7406 mL	29.4811 mL
5 mM	0.5896 mL	2.9481 mL	5.8962 mL
10 mM	0.2948 mL	1.4741 mL	2.9481 mL
50 mM	0.059 mL	0.2948 mL	0.5896 mL

Please select the appropriate solvent to prepare the stock solution, according to the solubility of the product in different solvents. Please use it as soon as possible.

Note: The dilution table applies only to solid products. For liquid products, please calculate the stock solution based on the stated concentration and/or density.

Reference

Burwick N, Zhang MY, et al. The eIF2-alpha kinase HRI is a novel therapeutic target in multiple myeloma[J]. Leuk Res. 2017 Apr;55:23-32.

Dai H, Wu B, Ge Y, et al. Deubiquitylase OTUD3 regulates integrated stress response to suppress progression and sorafenib resistance of liver cancer. Cell Reports. 2024, 43(7): 114487.

Inhibitor · Natural Compounds · Compound Libraries · Recombinant Proteins

This product is for Research Use Only · Not for Human or Veterinary or Therapeutic Use

Tel: 781-999-4286 E_mail: info@targetmol.com Address: 34 Washington Street, Wellesley Hills, MA 02481