

Stressin I

Chemical Properties

CAS No. :

Formula: C203H337N57O56

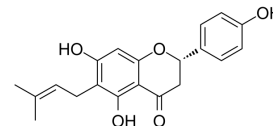
Molecular Weight: 4472.24

Keep away from moisture

Storage:

Powder: -20°C for 3 years | In solvent: -80°C for 1 year

Actual storage temperature shall be subject to the COA.



Biological Description

Description	Potent and selective corticotropin releasing factor receptor-1 (CRF1) agonist (Ki values are 1.5 and 224 nM for CRF1 and CRF2 receptors respectively). Increases ACTH levels and increases faecal pellet output in vivo following i.p. administration.
Targets(IC50)	CRFR

Solubility Information

Solubility H2O: 1 mg/mL (0.22 mM), Sonication is recommended.
(< 1 mg/ml refers to the product slightly soluble or insoluble)

Preparing Stock Solutions

	1mg	5mg	10mg
1 mM	0.2236 mL	1.118 mL	2.236 mL
5 mM	0.0447 mL	0.2236 mL	0.4472 mL
10 mM	0.0224 mL	0.1118 mL	0.2236 mL
50 mM	0.0045 mL	0.0224 mL	0.0447 mL

Please select the appropriate solvent to prepare the stock solution, according to the solubility of the product in different solvents. Please use it as soon as possible.

Note: The dilution table applies only to solid products. For liquid products, please calculate the stock solution based on the stated concentration and/or density.

Reference

Rivier et al (2007) Stressin1-A, a potent cortico. releasing factor receptor 1 (CRF1)-selective peptide agonist. J.Med. Chem. 50 1668 PMID:

Rivier et al (2002) Receptor-selective cortico. releasing factor analogs. Endocrin.Soc.Abstr. P2-50 Bruchas et al

(2009) CRF1-R activation of the dynorphin/kappa opioid system in the mouse basolateral amygdala mediates anxiety-like behavior. PLoS One. 4 e8528 PMID:

Inhibitor · Natural Compounds · Compound Libraries · Recombinant Proteins

This product is for Research Use Only· Not for Human or Veterinary or Therapeutic Use

Tel:781-999-4286 E_mail:info@targetmol.com Address:34 Washington Street,Wellesley Hills,MA 02481