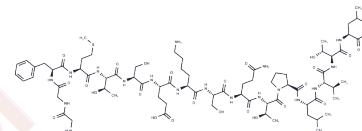


[Des-Tyr1]-gamma-Endorphin

Chemical Properties

CAS No. :	67810-56-4
Formula:	C74H122N18O25S
Molecular Weight:	1695.93
Storage:	Keep away from moisture Powder: -20°C for 3 years In solvent: -80°C for 1 year <small>Actual storage temperature shall be subject to the COA.</small>



Biological Description

Description	[Des-Tyr1]-gamma-Endorphin is a neuropeptide found in human cerebrospinal fluid. It exhibits antidepressant activity, helps eliminate active avoidance behaviors in rats, and reduces passive avoidance behaviors in these animals.
Targets(IC50)	Opioid Receptor

Preparing Stock Solutions

	1mg	5mg	10mg
1 mM	0.5896 mL	2.9482 mL	5.8965 mL
5 mM	0.1179 mL	0.5896 mL	1.1793 mL
10 mM	0.059 mL	0.2948 mL	0.5896 mL
50 mM	0.0118 mL	0.059 mL	0.1179 mL

Please select the appropriate solvent to prepare the stock solution, according to the solubility of the product in different solvents. Please use it as soon as possible.

Note: The dilution table applies only to solid products. For liquid products, please calculate the stock solution based on the stated concentration and/or density.

Inhibitor · Natural Compounds · Compound Libraries · Recombinant Proteins

This product is for Research Use Only · Not for Human or Veterinary or Therapeutic Use

Tel: 781-999-4286 E_mail: info@targetmol.com Address: 34 Washington Street, Wellesley Hills, MA 02481