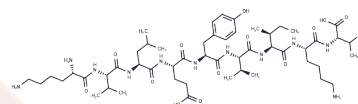


MAGE-A1-derived peptide

Chemical Properties

CAS No. :	160213-30-9
Formula:	C53H91N11O13
Molecular Weight:	1090.36
Storage:	Keep away from moisture Powder: -20°C for 3 years In solvent: -80°C for 1 year <small>Actual storage temperature shall be subject to the COA.</small>



Biological Description

Description	MAGE-A1-derived peptide is a short peptide sequence originating from the MAGE-A1 protein. Serving as a tumor-specific antigen, it can be recognized and activated by cytotoxic T lymphocytes (CTLs) to elicit an immune response against tumor cells expressing MAGE-A1. This immune response can result in the lysis and death of tumor cells. The peptide is utilized in research on tumor immunity.
-------------	--

Preparing Stock Solutions

	1mg	5mg	10mg
1 mM	0.9171 mL	4.5856 mL	9.1713 mL
5 mM	0.1834 mL	0.9171 mL	1.8343 mL
10 mM	0.0917 mL	0.4586 mL	0.9171 mL
50 mM	0.0183 mL	0.0917 mL	0.1834 mL

Please select the appropriate solvent to prepare the stock solution, according to the solubility of the product in different solvents. Please use it as soon as possible.

Note: The dilution table applies only to solid products. For liquid products, please calculate the stock solution based on the stated concentration and/or density.

Inhibitor · Natural Compounds · Compound Libraries · Recombinant Proteins

This product is for Research Use Only · Not for Human or Veterinary or Therapeutic Use

Tel: 781-999-4286 E_mail: info@targetmol.com Address: 34 Washington Street, Wellesley Hills, MA 02481