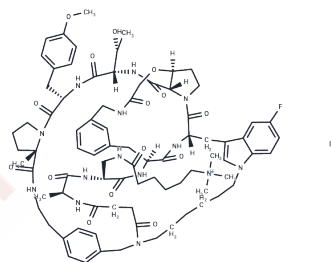


Enlicitide chloride

Chemical Properties

CAS No. :	2407527-16-4
Formula:	C ₈₂ H ₁₁₀ ClFN ₁₄ O ₁₅
Molecular Weight:	1586.29
Storage:	Keep away from moisture Powder: -20°C for 3 years In solvent: -80°C for 1 year <i>Actual storage temperature shall be subject to the COA.</i>



Biological Description

Description	Enlicitide chloride is an effective PCSK9 antagonist. It is utilized in the research of cardiovascular diseases such as atherosclerosis, hypercholesterolemia, coronary heart disease, metabolic syndrome, acute coronary syndrome, or associated cardiovascular and cardiac metabolic disorders.
Targets(IC50)	Serine Protease

Preparing Stock Solutions

	1mg	5mg	10mg
1 mM	0.6304 mL	3.152 mL	6.304 mL
5 mM	0.1261 mL	0.6304 mL	1.2608 mL
10 mM	0.063 mL	0.3152 mL	0.6304 mL
50 mM	0.0126 mL	0.063 mL	0.1261 mL

Please select the appropriate solvent to prepare the stock solution, according to the solubility of the product in different solvents. Please use it as soon as possible.

Note: The dilution table applies only to solid products. For liquid products, please calculate the stock solution based on the stated concentration and/or density.

Inhibitor · Natural Compounds · Compound Libraries · Recombinant Proteins

This product is for Research Use Only · Not for Human or Veterinary or Therapeutic Use

Tel:781-999-4286 E_mail:info@targetmol.com Address:34 Washington Street,Wellesley Hills,MA 02481