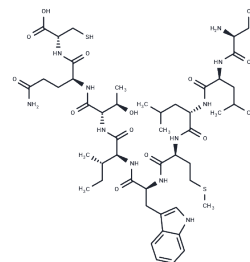


## NY-ESO-1 (157-165) peptide

## Chemical Properties

CAS No. :	202815-17-6
Formula:	C49H79N11O13S2
Molecular Weight:	1094.35
Storage:	Keep away from moisture Powder: -20°C for 3 years   In solvent: -80°C for 1 year <small>Actual storage temperature shall be subject to the COA.</small>



## Biological Description

Description	NY-ESO-1 (157-165) peptide is a peptide derived from the NY-ESO-1 protein and has the ability to activate the immune system. It is particularly effective in individuals positive for HLA-A2, as it can be recognized by CD8+ T cells, thus triggering an immune response. The presence of NY-ESO-1 (157-165) peptide in various tumors makes it a potential target for cancer immunotherapy. This peptide is also utilized in research focusing on cancer immunotherapy.
Targets(IC50)	Amino Acids and Derivatives

## Preparing Stock Solutions

	1mg	5mg	10mg
1 mM	0.9138 mL	4.5689 mL	9.1378 mL
5 mM	0.1828 mL	0.9138 mL	1.8276 mL
10 mM	0.0914 mL	0.4569 mL	0.9138 mL
50 mM	0.0183 mL	0.0914 mL	0.1828 mL

Please select the appropriate solvent to prepare the stock solution, according to the solubility of the product in different solvents. Please use it as soon as possible.

Note: The dilution table applies only to solid products. For liquid products, please calculate the stock solution based on the stated concentration and/or density.

**Inhibitor · Natural Compounds · Compound Libraries · Recombinant Proteins**

This product is for Research Use Only · Not for Human or Veterinary or Therapeutic Use

Tel:781-999-4286 E\_mail:info@targetmol.com Address:34 Washington Street,Wellesley Hills,MA 02481