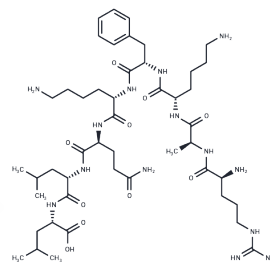


EBV BZLF1 (190-197)

Chemical Properties

CAS No. :	200124-17-0
Formula:	C47H82N14O10
Molecular Weight:	1003.24
Storage:	Keep away from moisture Powder: -20°C for 3 years In solvent: -80°C for 1 year <small>Actual storage temperature shall be subject to the COA.</small>



Biological Description

Description	EBVBZLF1 (190-197) is an immunodominant CEF control peptide derived from the Epstein-Barr virus (EBV). It serves as a suitable epitope for CD8+ T cells, facilitating the release of IFN γ . The CD8 positive cytotoxic T lymphocytes (CTL) response to EBVBZLF1 (190-197) is diverse, capable of cross-recognizing similar peptide sequences from both host self-proteins and bacterial proteins. This peptide is also utilized in research on autoimmune diseases.
Targets(IC50)	Antibacterial

Preparing Stock Solutions

	1mg	5mg	10mg
1 mM	0.9968 mL	4.9839 mL	9.9677 mL
5 mM	0.1994 mL	0.9968 mL	1.9935 mL
10 mM	0.0997 mL	0.4984 mL	0.9968 mL
50 mM	0.0199 mL	0.0997 mL	0.1994 mL

Please select the appropriate solvent to prepare the stock solution, according to the solubility of the product in different solvents. Please use it as soon as possible.

Note: The dilution table applies only to solid products. For liquid products, please calculate the stock solution based on the stated concentration and/or density.

Inhibitor · Natural Compounds · Compound Libraries · Recombinant Proteins

This product is for Research Use Only · Not for Human or Veterinary or Therapeutic Use

Tel:781-999-4286 E_mail:info@targetmol.com Address:34 Washington Street,Wellesley Hills,MA 02481