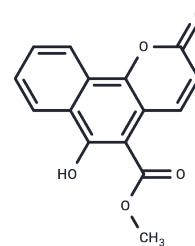


Rubilactone

Chemical Properties

CAS No. :	142182-54-5
Formula:	C ₁₅ H ₁₀ O ₅
Molecular Weight:	270.24
Storage:	Powder: -20°C for 3 years In solvent: -80°C for 1 year Actual storage temperature shall be subject to the COA.



Biological Description

Description	Rubilactone is a naphthoic acid ester extracted from the roots of <i>Rubia cordifolia</i> L.
Targets(IC50)	Others

Preparing Stock Solutions

	1mg	5mg	10mg
1 mM	3.7004 mL	18.5021 mL	37.0041 mL
5 mM	0.7401 mL	3.7004 mL	7.4008 mL
10 mM	0.370 mL	1.8502 mL	3.7004 mL
50 mM	0.074 mL	0.370 mL	0.7401 mL

Please select the appropriate solvent to prepare the stock solution, according to the solubility of the product in different solvents. Please use it as soon as possible.

Note: The dilution table applies only to solid products. For liquid products, please calculate the stock solution based on the stated concentration and/or density.

Reference

- Ho LK, Don MJ, Chen HC, Yeh SF, Chen JM. Inhibition of hepatitis B surface antigen secretion on human hepatoma cells. Components from *Rubia cordifolia*. *J Nat Prod.* 1996 Mar;59(3):330-3. PubMed PMID: 8882438.
- Hua HM, Wang SX, Wu LJ, Li X, Zhu TR. [Studies on naphthoic acid esters from the roots of *Rubia cordifolia* L]. *Yao Xue Xue Bao.* 1992;27(4):279-82. Chinese. PubMed PMID: 1442042.

Inhibitor · Natural Compounds · Compound Libraries · Recombinant Proteins

This product is for Research Use Only · Not for Human or Veterinary or Therapeutic Use

Tel:781-999-4286 E_mail:info@targetmol.com Address:34 Washington Street,Wellesley Hills,MA 02481