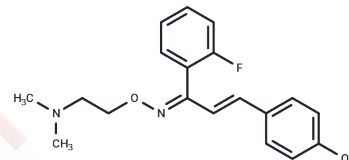


Eplivanserin (mixture)

Chemical Properties

CAS No. :	130581-13-4
Formula:	C ₁₉ H ₂₁ FN ₂ O ₂
Molecular Weight:	328.387
Storage:	Powder: -20°C for 3 years Actual storage temperature shall be subject to the COA.



Biological Description

Description	Eplivanserin mixture is a selective serotonin reuptake inhibitor and a 5-HT _{2A} receptor antagonist,
Targets(IC ₅₀)	5-HT Receptor, Serotonin Transporter

Solubility Information

Solubility	DMSO: 125 mg/mL (380.65 mM), Sonication is recommended. (< 1 mg/ml refers to the product slightly soluble or insoluble)
In vivo Formulation	10% DMSO+40% PEG300+5% Tween-80+45% Saline: 3.3 mg/mL (10.05 mM), Sonication is recommended. <i>Please add the solvents sequentially, clarifying the solution as much as possible before adding the next one. Dissolve by heating and/or sonication if necessary. Working solution is recommended to be prepared and used immediately. The formulation provided above is for reference purposes only. In vivo formulations may vary and should be modified based on specific experimental conditions.</i>

Preparing Stock Solutions

	1mg	5mg	10mg
1 mM	3.0452 mL	15.2258 mL	30.4516 mL
5 mM	0.609 mL	3.0452 mL	6.0903 mL
10 mM	0.3045 mL	1.5226 mL	3.0452 mL
50 mM	0.0609 mL	0.3045 mL	0.609 mL

Please select the appropriate solvent to prepare the stock solution, according to the solubility of the product in different solvents. Please use it as soon as possible.

Note: The dilution table applies only to solid products. For liquid products, please calculate the stock solution based on the stated concentration and/or density.

Reference

BERMAN, Robert, Mark, et al. COMPOSITIONS CONTAINING A SEROTONIN SELECTIVE REUPTAKE INHIBITOR AND A 5-HT2A RECEPTOR ANTAGONIST. WO 2005/002578 A1.

Inhibitor · Natural Compounds · Compound Libraries · Recombinant Proteins

This product is for Research Use Only· Not for Human or Veterinary or Therapeutic Use

Tel:781-999-4286 E_mail:info@targetmol.com Address:34 Washington Street,Wellesley Hills,MA 02481