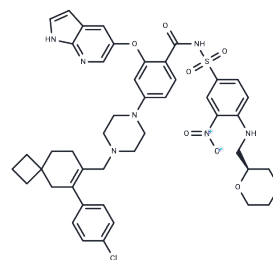


Lisafoclax

Chemical Properties

CAS No. :	2180923-05-9
Formula:	C ₄₅ H ₄₈ ClN ₇ O ₈ S
Molecular Weight:	882.42
Storage:	Powder: -20°C for 3 years In solvent: -80°C for 1 year Actual storage temperature shall be subject to the COA.



Biological Description

Description	Lisafoclax (Bcl-2/Bcl-xl inhibitor 1) is an oral dual inhibitor of Bcl-2 and Bcl-xl, with IC50 values of 2 nM and 5.9 nM for Bcl-2 and Bcl-xl, respectively. Lisafoclax is used to treat chronic lymphocytic leukemia (CLL) by inhibiting the action of the BCL-2 protein, which promotes the death of leukemia cells.
Targets(IC50)	Bcl-2 Family
In vitro	Lisafoclax shows IC50s of 5.5 nM and 6.4 nM in Bcl-2 dependent RS4 11 cells and Bcl-xl dependent Molm 13 cells[1].

Solubility Information

Solubility	DMSO: 150 mg/mL (169.99 mM),Sonication is recommended. (< 1 mg/ml refers to the product slightly soluble or insoluble)
------------	---

Preparing Stock Solutions

	1mg	5mg	10mg
1 mM	1.1332 mL	5.6662 mL	11.3325 mL
5 mM	0.2266 mL	1.1332 mL	2.2665 mL
10 mM	0.1133 mL	0.5666 mL	1.1332 mL
50 mM	0.0227 mL	0.1133 mL	0.2266 mL

Please select the appropriate solvent to prepare the stock solution, according to the solubility of the product in different solvents. Please use it as soon as possible.

Note: The dilution table applies only to solid products. For liquid products, please calculate the stock solution based on the stated concentration and/or density.

Reference

WANG, Chia, et al. N-(PHENYLSULFONYL)BENZAMIDES AND RELATED COMPOUNDS AS BCL-2 INHIBITORS. Patent. WO2018027097A1.

Inhibitor · Natural Compounds · Compound Libraries · Recombinant Proteins

This product is for Research Use Only · Not for Human or Veterinary or Therapeutic Use

Tel:781-999-4286 E_mail:info@targetmol.com Address:34 Washington Street,Wellesley Hills,MA 02481