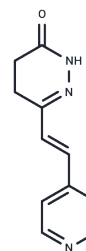


ICI 153110

Chemical Properties

CAS No. : 87164-90-7
 Formula: C₁₁H₁₁N₃O
 Molecular Weight: 201.22
 Storage: Powder: -20°C for 3 years | In solvent: -80°C for 1 year
 Actual storage temperature shall be subject to the COA.



Biological Description

Description	ICI 153110 is an orally active phosphodiesterase inhibitor with both inotropic and vasodilating properties, designed for the treatment of congestive cardiac failure.
Targets(IC50)	Others,PDE
In vivo	Administration of ICI 153110 resulted in the death of fourteen animals in both high-dose main test and reversibility groups, due to direct or indirect effects. In a female rat receiving 10 mg/kg/day of ICI 153110, a mild focal arteritis was observed, characterized by mixed cell infiltration and early fibrous tissue formation in the artery's outer layer. Premature deaths of two rats were attributed to complications from intratracheal intubation with a dosing solution at 250 mg/kg/day. Additionally, minimal focal arteritis with medial necrosis and inflammation in both the middle and outer layers of the arteries was detected in two other animals administered doses of 5 and 250 mg/kg/day. ICI 153110, an orally active compound with vasodilating and inotropic effects, is aimed at treating congestive cardiac failure.

Preparing Stock Solutions

	1mg	5mg	10mg
1 mM	4.9697 mL	24.8484 mL	49.6968 mL
5 mM	0.9939 mL	4.9697 mL	9.9394 mL
10 mM	0.497 mL	2.4848 mL	4.9697 mL
50 mM	0.0994 mL	0.497 mL	0.9939 mL

Please select the appropriate solvent to prepare the stock solution, according to the solubility of the product in different solvents. Please use it as soon as possible.

Note: The dilution table applies only to solid products. For liquid products, please calculate the stock solution based on the stated concentration and/or density.

Reference

Westwood FR, et al. Pathologic changes in blood vessels following administration of an inotropic vasodilator (ICI 153,110) to the rat. Fundam Appl Toxicol. 1990 May;14(4):797-809.

Inhibitor · Natural Compounds · Compound Libraries · Recombinant Proteins

This product is for Research Use Only · Not for Human or Veterinary or Therapeutic Use

Tel:781-999-4286 E_mail:info@targetmol.com Address:34 Washington Street,Wellesley Hills,MA 02481