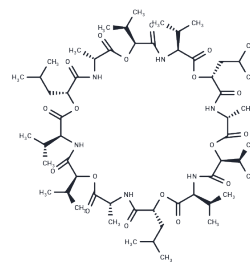


Cereulide

Chemical Properties

CAS No. :	157232-64-9
Formula:	C57H96N6O18
Molecular Weight:	1153.40
Storage:	Keep away from moisture Powder: -20°C for 3 years In solvent: -80°C for 1 year <small>Actual storage temperature shall be subject to the COA.</small>



Biological Description

Description	Cereulide is a toxic peptide produced by <i>Bacillus cereus</i> . It can induce apoptosis (Apoptosis) and affects mitochondria, resulting in dysfunction of various organs such as the liver, pancreas, brain, and intestines, as well as systems including the immune and nervous systems.
Targets(IC50)	Apoptosis

Preparing Stock Solutions

	1mg	5mg	10mg
1 mM	0.867 mL	4.335 mL	8.670 mL
5 mM	0.1734 mL	0.867 mL	1.734 mL
10 mM	0.0867 mL	0.4335 mL	0.867 mL
50 mM	0.0173 mL	0.0867 mL	0.1734 mL

Please select the appropriate solvent to prepare the stock solution, according to the solubility of the product in different solvents. Please use it as soon as possible.

Note: The dilution table applies only to solid products. For liquid products, please calculate the stock solution based on the stated concentration and/or density.

Inhibitor · Natural Compounds · Compound Libraries · Recombinant Proteins

This product is for Research Use Only · Not for Human or Veterinary or Therapeutic Use

Tel:781-999-4286 E_mail:info@targetmol.com Address:34 Washington Street,Wellesley Hills,MA 02481