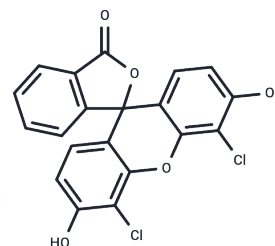


Dichlorofluorescein

Chemical Properties

CAS No. :	2320-96-9
Formula:	C ₂₀ H ₁₀ Cl ₂ O ₅
Molecular Weight:	401.20
Storage:	Powder: -20°C for 3 years In solvent: -80°C for 1 year Actual storage temperature shall be subject to the COA.



Biological Description

Description	Dichlorofluorescein is a fluorescent dye employed in various scientific experiments and applications. It serves as an absorption indicator for halogen determination, facilitates the study of intracellular molecular and ion movements, and enables detection and measurement of ROS production. Dichlorofluorescein is also utilized in researching the pathological mechanisms of oxidative stress-related diseases (e.g., Parkinson's disease, Alzheimer's disease).
Targets(IC50)	Others, Reactive Oxygen Species

Preparing Stock Solutions

	1mg	5mg	10mg
1 mM	2.4925 mL	12.4626 mL	24.9252 mL
5 mM	0.4985 mL	2.4925 mL	4.985 mL
10 mM	0.2493 mL	1.2463 mL	2.4925 mL
50 mM	0.0499 mL	0.2493 mL	0.4985 mL

Please select the appropriate solvent to prepare the stock solution, according to the solubility of the product in different solvents. Please use it as soon as possible.

Note: The dilution table applies only to solid products. For liquid products, please calculate the stock solution based on the stated concentration and/or density.

Inhibitor · Natural Compounds · Compound Libraries · Recombinant Proteins

This product is for Research Use Only · Not for Human or Veterinary or Therapeutic Use

Tel: 781-999-4286 E_mail: info@targetmol.com Address: 34 Washington Street, Wellesley Hills, MA 02481