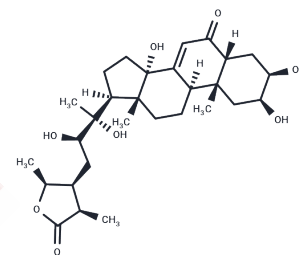


## 25-Epi-28-epi-cyasterone

## Chemical Properties

CAS No. : 851727-39-4  
 Formula: C<sub>29</sub>H<sub>44</sub>O<sub>8</sub>  
 Molecular Weight: 520.65  
 Storage: Powder: -20°C for 3 years | In solvent: -80°C for 1 year  
 Actual storage temperature shall be subject to the COA.



## Biological Description

Description	25-Epi-28-epi-cyasterone (3), a stereoisomer of cyasterone, is derived from <i>Cyathula officinalis</i> .
-------------	---

## Preparing Stock Solutions

	1mg	5mg	10mg
1 mM	1.9207 mL	9.6034 mL	19.2068 mL
5 mM	0.3841 mL	1.9207 mL	3.8414 mL
10 mM	0.1921 mL	0.9603 mL	1.9207 mL
50 mM	0.0384 mL	0.1921 mL	0.3841 mL

Please select the appropriate solvent to prepare the stock solution, according to the solubility of the product in different solvents. Please use it as soon as possible.

Note: The dilution table applies only to solid products. For liquid products, please calculate the stock solution based on the stated concentration and/or density.

Inhibitor · Natural Compounds · Compound Libraries · Recombinant Proteins

This product is for Research Use Only · Not for Human or Veterinary or Therapeutic Use

Tel: 781-999-4286 E\_mail: info@targetmol.com Address: 34 Washington Street, Wellesley Hills, MA 02481