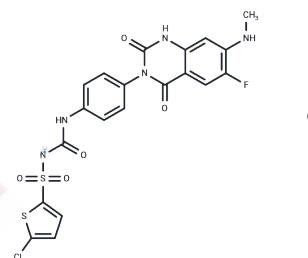


Elinogrel potassium

Chemical Properties

| | |
|-------------------|---|
| CAS No. : | 936501-01-8 |
| Formula: | C ₂₀ H ₁₄ ClFKN ₅ O ₅ S ₂ |
| Molecular Weight: | 562.03 |
| Storage: | Powder: -20°C for 3 years In solvent: -80°C for 1 year Actual storage temperature shall be subject to the COA. |



Biological Description

| | |
|---------------|---|
| Description | Elinogrel (PRT060128) potassium functions as a reversible, competitive, and orally active antagonist of the P2Y ₁₂ receptor. This compound effectively inhibits thrombosis . |
| Targets(IC50) | P2Y Receptor |
| In vivo | Elinogrel, administered orally at 60 mg/kg daily for three days, has been shown to inhibit thrombosis [2]. At a dose of 1 mg/kg intravenously, Elinogrel can prevent residual thrombosis in mice treated with clopidogrel at 50 mg/kg orally for three days in a FeCl ₃ -induced vascular injury model [2]. Animal Model: C57BL/6J mice [2] Dosage: 60 mg/kg Administration: P.o.; daily for 3 days Result: Inhibited thrombosis in mouse. |

Preparing Stock Solutions

| | 1mg | 5mg | 10mg |
|-------|-----------|-----------|------------|
| 1 mM | 1.7793 mL | 8.8963 mL | 17.7926 mL |
| 5 mM | 0.3559 mL | 1.7793 mL | 3.5585 mL |
| 10 mM | 0.1779 mL | 0.8896 mL | 1.7793 mL |
| 50 mM | 0.0356 mL | 0.1779 mL | 0.3559 mL |

Please select the appropriate solvent to prepare the stock solution, according to the solubility of the product in different solvents. Please use it as soon as possible.

Note: The dilution table applies only to solid products. For liquid products, please calculate the stock solution based on the stated concentration and/or density.

Inhibitor · Natural Compounds · Compound Libraries · Recombinant Proteins

This product is for Research Use Only · Not for Human or Veterinary or Therapeutic Use

Tel:781-999-4286 E_mail:info@targetmol.com Address:34 Washington Street,Wellesley Hills,MA 02481