

## All-trans-Phytofluene

## Chemical Properties

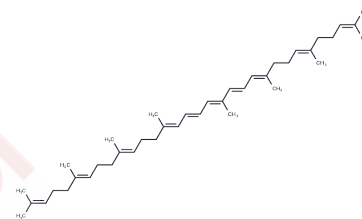
CAS No. : 540-05-6

Formula: C<sub>40</sub>H<sub>62</sub>

Molecular Weight: 542.92

Storage: Powder: -20°C for 3 years | In solvent: -80°C for 1 year

Actual storage temperature shall be subject to the COA.



## Biological Description

Description	All-trans-Phytofluene (Phytofluene), a compound extractable from tomatoes, plays a crucial role in the isomerization of lycopene and phytoene within the same fruit.
-------------	--

## Preparing Stock Solutions

	1mg	5mg	10mg
1 mM	1.8419 mL	9.2095 mL	18.4189 mL
5 mM	0.3684 mL	1.8419 mL	3.6838 mL
10 mM	0.1842 mL	0.9209 mL	1.8419 mL
50 mM	0.0368 mL	0.1842 mL	0.3684 mL

Please select the appropriate solvent to prepare the stock solution, according to the solubility of the product in different solvents. Please use it as soon as possible.

Note: The dilution table applies only to solid products. For liquid products, please calculate the stock solution based on the stated concentration and/or density.

Inhibitor · Natural Compounds · Compound Libraries · Recombinant Proteins

This product is for Research Use Only · Not for Human or Veterinary or Therapeutic Use

Tel:781-999-4286

E\_mail:info@targetmol.com

Address:34 Washington Street,Wellesley Hills,MA 02481