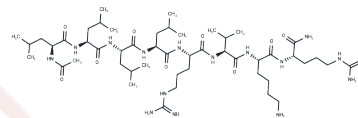


Multi-Leu peptide

Chemical Properties

CAS No. :	1413058-07-7
Formula:	C ₄₉ H ₉₄ N ₁₆ O ₉
Molecular Weight:	1051.37
Storage:	Keep away from moisture Powder: -20°C for 3 years In solvent: -80°C for 1 year <small>Actual storage temperature shall be subject to the COA.</small>



Biological Description

Description	Multi-Leu peptide (ML-peptide), with a K _i value of 22 nM, acts as a potent inhibitor of PACE4 by competitively binding to its active site and mimicking its substrate sequence, thus suppressing the enzyme's catalytic function. This compound is useful for investigating PACE4's specific role in the progression of prostate cancer.
Targets(IC50)	Autophagy

Preparing Stock Solutions

	1mg	5mg	10mg
1 mM	0.9511 mL	4.7557 mL	9.5114 mL
5 mM	0.1902 mL	0.9511 mL	1.9023 mL
10 mM	0.0951 mL	0.4756 mL	0.9511 mL
50 mM	0.019 mL	0.0951 mL	0.1902 mL

Please select the appropriate solvent to prepare the stock solution, according to the solubility of the product in different solvents. Please use it as soon as possible.

Note: The dilution table applies only to solid products. For liquid products, please calculate the stock solution based on the stated concentration and/or density.

Inhibitor · Natural Compounds · Compound Libraries · Recombinant Proteins

This product is for Research Use Only · Not for Human or Veterinary or Therapeutic Use

Tel: 781-999-4286 E_mail: info@targetmol.com Address: 34 Washington Street, Wellesley Hills, MA 02481