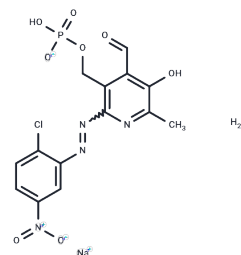


## MRS 2211 sodium hydrate

## Chemical Properties

CAS No. :	1197030-56-0
Formula:	C <sub>14</sub> H <sub>13</sub> ClN <sub>4</sub> NaO <sub>9</sub> P
Molecular Weight:	470.69
Storage:	Powder: -20°C for 3 years   In solvent: -80°C for 1 year Actual storage temperature shall be subject to the COA.



## Biological Description

Description	MRS 2211 sodium hydrate, characterized by a competitive antagonism of the P2Y <sub>13</sub> receptor (pIC <sub>50</sub> = 5.97), exhibits high specificity, demonstrating over 20-fold selectivity versus the P2Y <sub>1</sub> and P2Y <sub>12</sub> receptors. This compound is instrumental in research probing the P2Y <sub>13</sub> receptor's involvement in a variety of physiological and pathological conditions, including its roles in blood cells, the nervous system, and the immune system.
Targets(IC <sub>50</sub> )	P2Y Receptor

## Preparing Stock Solutions

	1mg	5mg	10mg
1 mM	2.1245 mL	10.6227 mL	21.2454 mL
5 mM	0.4249 mL	2.1245 mL	4.2491 mL
10 mM	0.2125 mL	1.0623 mL	2.1245 mL
50 mM	0.0425 mL	0.2125 mL	0.4249 mL

Please select the appropriate solvent to prepare the stock solution, according to the solubility of the product in different solvents. Please use it as soon as possible.

Note: The dilution table applies only to solid products. For liquid products, please calculate the stock solution based on the stated concentration and/or density.

Inhibitor · Natural Compounds · Compound Libraries · Recombinant Proteins

This product is for Research Use Only · Not for Human or Veterinary or Therapeutic Use

Tel: 781-999-4286 E\_mail: info@targetmol.com Address: 34 Washington Street, Wellesley Hills, MA 02481