

ATPase-IN-4

Chemical Properties

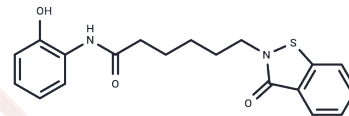
CAS No. : 1219577-48-6

Formula: C₁₉H₂₀N₂O₃S

Molecular Weight: 356.44

Storage: Powder: -20°C for 3 years | In solvent: -80°C for 1 year

Actual storage temperature shall be subject to the COA.



Biological Description

Description	Compound MS1 (ATPase-IN-4) effectively inhibits the ATPase activity of EHD4, demonstrating an IC ₅₀ of 0.92 μM. It also suppresses the enzymatic activity of EHD2.
Targets(IC ₅₀)	ATPase,Others

Preparing Stock Solutions

	1mg	5mg	10mg
1 mM	2.8055 mL	14.0276 mL	28.0552 mL
5 mM	0.5611 mL	2.8055 mL	5.611 mL
10 mM	0.2806 mL	1.4028 mL	2.8055 mL
50 mM	0.0561 mL	0.2806 mL	0.5611 mL

Please select the appropriate solvent to prepare the stock solution, according to the solubility of the product in different solvents. Please use it as soon as possible.

Note: The dilution table applies only to solid products. For liquid products, please calculate the stock solution based on the stated concentration and/or density.

Inhibitor · Natural Compounds · Compound Libraries · Recombinant Proteins

This product is for Research Use Only · Not for Human or Veterinary or Therapeutic Use

Tel:781-999-4286 E_mail:info@targetmol.com Address:34 Washington Street,Wellesley Hills,MA 02481