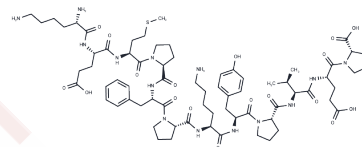


KEMPFKYPVEP

Chemical Properties

CAS No. :	1393589-51-9
Formula:	C70H104N14O18S
Molecular Weight:	1461.72
Storage:	Keep away from moisture Powder: -20°C for 3 years In solvent: -80°C for 1 year <small>Actual storage temperature shall be subject to the COA.</small>



Biological Description

Description	KEMPFKYPVEP is a neuropeptide composed of 12 amino acids. It has the ability to elevate dopamine (DA) and norepinephrine (NE) levels in the prefrontal cortex and demonstrates efficacy in enhancing spatial and object recognition memory in a Scopolamine-induced amnesia mouse model.
Targets(IC50)	Dopamine Receptor

Preparing Stock Solutions

	1mg	5mg	10mg
1 mM	0.6841 mL	3.4206 mL	6.8413 mL
5 mM	0.1368 mL	0.6841 mL	1.3683 mL
10 mM	0.0684 mL	0.3421 mL	0.6841 mL
50 mM	0.0137 mL	0.0684 mL	0.1368 mL

Please select the appropriate solvent to prepare the stock solution, according to the solubility of the product in different solvents. Please use it as soon as possible.

Note: The dilution table applies only to solid products. For liquid products, please calculate the stock solution based on the stated concentration and/or density.

Inhibitor · Natural Compounds · Compound Libraries · Recombinant Proteins

This product is for Research Use Only · Not for Human or Veterinary or Therapeutic Use

Tel:781-999-4286 E_mail:info@targetmol.com Address:34 Washington Street,Wellesley Hills,MA 02481