

## Ser-Ala-Pro

## Chemical Properties

CAS No. : 403694-80-4

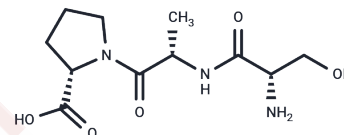
Formula: C<sub>11</sub>H<sub>19</sub>N<sub>3</sub>O<sub>5</sub>

Molecular Weight: 273.29

Keep away from moisture

Storage: Powder: -20°C for 3 years | In solvent: -80°C for 1 year

Actual storage temperature shall be subject to the COA.



## Biological Description

Description	Ser-Ala-Pro is a specific X-Pro structured angiotensin-converting enzyme (ACE) inhibitory peptide. It shows potential for use in hypertension research.
Targets(IC50)	Angiotensin-converting Enzyme (ACE)

## Preparing Stock Solutions

	1mg	5mg	10mg
1 mM	3.6591 mL	18.2956 mL	36.5912 mL
5 mM	0.7318 mL	3.6591 mL	7.3182 mL
10 mM	0.3659 mL	1.8296 mL	3.6591 mL
50 mM	0.0732 mL	0.3659 mL	0.7318 mL

Please select the appropriate solvent to prepare the stock solution, according to the solubility of the product in different solvents. Please use it as soon as possible.

Note: The dilution table applies only to solid products. For liquid products, please calculate the stock solution based on the stated concentration and/or density.

**Inhibitor · Natural Compounds · Compound Libraries · Recombinant Proteins**

This product is for Research Use Only · Not for Human or Veterinary or Therapeutic Use

Tel:781-999-4286 E\_mail:info@targetmol.com Address:34 Washington Street,Wellesley Hills,MA 02481