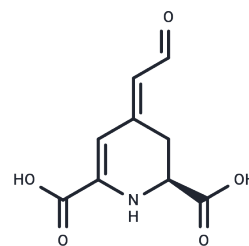


## Betalamic acid

## Chemical Properties

CAS No. : 18766-66-0  
 Formula: C<sub>9</sub>H<sub>9</sub>NO<sub>5</sub>  
 Molecular Weight: 211.17  
 Storage: Powder: -20°C for 3 years | In solvent: -80°C for 1 year  
 Actual storage temperature shall be subject to the COA.



## Biological Description

Description	Betalamic acid is a naturally occurring intermediate found in plants of the order Centrospermae and a decomposition product of the red pigment betanin. Its presence can be confirmed through reactions with cyclo-DOPA to form betanidin and with L-proline to produce indicaxanthin.
-------------	--

## Preparing Stock Solutions

	1mg	5mg	10mg
1 mM	4.7355 mL	23.6776 mL	47.3552 mL
5 mM	0.9471 mL	4.7355 mL	9.471 mL
10 mM	0.4736 mL	2.3678 mL	4.7355 mL
50 mM	0.0947 mL	0.4736 mL	0.9471 mL

Please select the appropriate solvent to prepare the stock solution, according to the solubility of the product in different solvents. Please use it as soon as possible.

Note: The dilution table applies only to solid products. For liquid products, please calculate the stock solution based on the stated concentration and/or density.

Inhibitor · Natural Compounds · Compound Libraries · Recombinant Proteins

This product is for Research Use Only · Not for Human or Veterinary or Therapeutic Use

Tel:781-999-4286 E\_mail:info@targetmol.com Address:34 Washington Street,Wellesley Hills,MA 02481