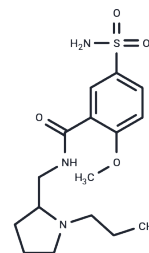


Prosulpride

Chemical Properties

CAS No. :	68556-59-2
Formula:	C ₁₆ H ₂₅ N ₃ O ₄ S
Molecular Weight:	355.45
Storage:	Powder: -20°C for 3 years In solvent: -80°C for 1 year Actual storage temperature shall be subject to the COA.



Biological Description

Description	Prosulpride (GRI 1665) is a neuroleptic agent that selectively blocks dopaminergic receptors.
Targets(IC50)	Dopamine Receptor

Preparing Stock Solutions

	1mg	5mg	10mg
1 mM	2.8133 mL	14.0667 mL	28.1334 mL
5 mM	0.5627 mL	2.8133 mL	5.6267 mL
10 mM	0.2813 mL	1.4067 mL	2.8133 mL
50 mM	0.0563 mL	0.2813 mL	0.5627 mL

Please select the appropriate solvent to prepare the stock solution, according to the solubility of the product in different solvents. Please use it as soon as possible.

Note: The dilution table applies only to solid products. For liquid products, please calculate the stock solution based on the stated concentration and/or density.

Inhibitor · Natural Compounds · Compound Libraries · Recombinant Proteins

This product is for Research Use Only · Not for Human or Veterinary or Therapeutic Use

Tel: 781-999-4286 E_mail: info@targetmol.com Address: 34 Washington Street, Wellesley Hills, MA 02481