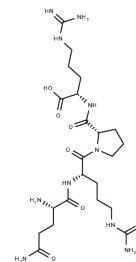


## Soybean peptide QRPR

## Chemical Properties

CAS No. :	125585-15-1
Formula:	C <sub>22</sub> H <sub>41</sub> N <sub>11</sub> O <sub>6</sub>
Molecular Weight:	555.63
Storage:	Keep away from moisture Powder: -20°C for 3 years   In solvent: -80°C for 1 year <small>Actual storage temperature shall be subject to the COA.</small>



## Biological Description

Description	Soybean peptide QRPR serves as an autophagy activator. It stimulates cell autophagy by upregulating the expression and activity of PIK3, AKT, and mTOR, which subsequently leads to a reduction in inflammatory responses.
Targets(IC50)	Autophagy

## Preparing Stock Solutions

	1mg	5mg	10mg
1 mM	1.7998 mL	8.9988 mL	17.9976 mL
5 mM	0.360 mL	1.7998 mL	3.5995 mL
10 mM	0.180 mL	0.8999 mL	1.7998 mL
50 mM	0.036 mL	0.180 mL	0.360 mL

Please select the appropriate solvent to prepare the stock solution, according to the solubility of the product in different solvents. Please use it as soon as possible.

Note: The dilution table applies only to solid products. For liquid products, please calculate the stock solution based on the stated concentration and/or density.

**Inhibitor · Natural Compounds · Compound Libraries · Recombinant Proteins**

This product is for Research Use Only · Not for Human or Veterinary or Therapeutic Use

Tel:781-999-4286 E\_mail:info@targetmol.com Address:34 Washington Street,Wellesley Hills,MA 02481