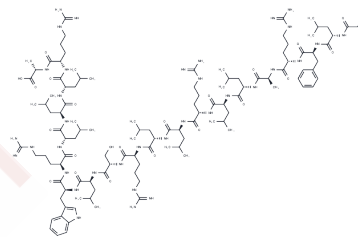


ppTG20

## Chemical Properties

CAS No. : 380480-75-1  
 Formula: C115H198N36O22  
 Molecular Weight: 2437.03  
 Storage: Keep away from moisture  
 Powder: -20°C for 3 years | In solvent: -80°C for 1 year  
 Actual storage temperature shall be subject to the COA.



## Biological Description

Description	ppTG20 is an amphiphilic cell-penetrating peptide (KALA) utilized for gene transfection. It has the ability to bind with DNA, disrupt membrane stability, and mediate DNA transfection.
-------------	---

## Preparing Stock Solutions

	1mg	5mg	10mg
1 mM	0.4103 mL	2.0517 mL	4.1034 mL
5 mM	0.0821 mL	0.4103 mL	0.8207 mL
10 mM	0.041 mL	0.2052 mL	0.4103 mL
50 mM	0.0082 mL	0.041 mL	0.0821 mL

Please select the appropriate solvent to prepare the stock solution, according to the solubility of the product in different solvents. Please use it as soon as possible.

Note: The dilution table applies only to solid products. For liquid products, please calculate the stock solution based on the stated concentration and/or density.

**Inhibitor · Natural Compounds · Compound Libraries · Recombinant Proteins**

This product is for Research Use Only · Not for Human or Veterinary or Therapeutic Use

Tel:781-999-4286 E\_mail:info@targetmol.com Address:34 Washington Street,Wellesley Hills,MA 02481