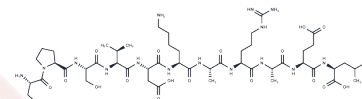


SMCY peptide

Chemical Properties

CAS No. :	169312-12-3
Formula:	C49H85N15O18
Molecular Weight:	1172.29
Storage:	Keep away from moisture Powder: -20°C for 3 years In solvent: -80°C for 1 year <small>Actual storage temperature shall be subject to the COA.</small>



Biological Description

Description	SMCY peptide blocks the interaction of an iodinated standard peptide with HLA-B7, exhibiting an IC50 of 34 nM. As an H-Y antigen epitope, it can be displayed by the HLA-B7 molecule and identified by specific T cells, potentially resulting in transplant rejection.
-------------	---

Preparing Stock Solutions

	1mg	5mg	10mg
1 mM	0.853 mL	4.2652 mL	8.5303 mL
5 mM	0.1706 mL	0.853 mL	1.7061 mL
10 mM	0.0853 mL	0.4265 mL	0.853 mL
50 mM	0.0171 mL	0.0853 mL	0.1706 mL

Please select the appropriate solvent to prepare the stock solution, according to the solubility of the product in different solvents. Please use it as soon as possible.

Note: The dilution table applies only to solid products. For liquid products, please calculate the stock solution based on the stated concentration and/or density.

Inhibitor · Natural Compounds · Compound Libraries · Recombinant Proteins

This product is for Research Use Only · Not for Human or Veterinary or Therapeutic Use

Tel:781-999-4286 E_mail:info@targetmol.com Address:34 Washington Street,Wellesley Hills,MA 02481