

D-Ala-Lys-AMCA hydrochloride

Chemical Properties

CAS No. : 2703746-41-0

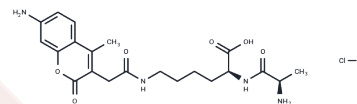
Formula: C₂₁H₂₉ClN₄O₆

Molecular Weight: 468.93

Keep away from moisture

Storage: Pure form: -20°C for 3 years | In solvent: -80°C for 1 year

Actual storage temperature shall be subject to the COA.



Biological Description

Description	D-Ala-Lys-AMCA hydrochloride, a known substrate of proton-coupled oligopeptide transporter 1 (PEPT1), emits blue fluorescence and may be transported into Caco-2 cells and liver cancer cells.
Targets(IC50)	Others

Solubility Information

Solubility	H ₂ O: 100 mg/mL (213.25 mM), Sonication is recommended. DMSO: 100 mg/mL (213.25 mM), Sonication is recommended. (< 1 mg/ml refers to the product slightly soluble or insoluble)
In vivo Formulation	10% DMSO+40% PEG300+5% Tween 80+45% Saline: 4 mg/mL (8.53 mM), Sonication is recommended. <i>Please add the solvents sequentially, clarifying the solution as much as possible before adding the next one. Dissolve by heating and/or sonication if necessary. Working solution is recommended to be prepared and used immediately. The formulation provided above is for reference purposes only. In vivo formulations may vary and should be modified based on specific experimental conditions.</i>

Preparing Stock Solutions

	1mg	5mg	10mg
1 mM	2.1325 mL	10.6626 mL	21.3251 mL
5 mM	0.4265 mL	2.1325 mL	4.265 mL
10 mM	0.2133 mL	1.0663 mL	2.1325 mL
50 mM	0.0427 mL	0.2133 mL	0.4265 mL

Please select the appropriate solvent to prepare the stock solution, according to the solubility of the product in different solvents. Please use it as soon as possible.

Note: The dilution table applies only to solid products. For liquid products, please calculate the stock solution based on the stated concentration and/or density.

Reference

Gong Y, et al. Specific expression of proton-coupled oligopeptide transporter 1 in primary hepatocarcinoma-anovel strategy for tumor-targeted therapy. *Oncol Lett.* 2017 Oct;14(4):4158-4166.

Inhibitor · Natural Compounds · Compound Libraries · Recombinant Proteins

This product is for Research Use Only · Not for Human or Veterinary or Therapeutic Use

Tel:781-999-4286 E_mail:info@targetmol.com Address:34 Washington Street,Wellesley Hills,MA 02481