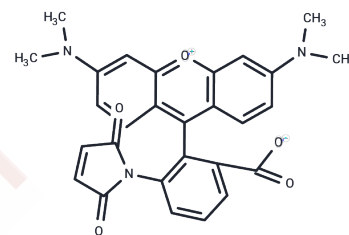


Tetramethylrhodamine-6-maleimide

Chemical Properties

CAS No. :	174568-68-4
Formula:	C ₂₈ H ₂₃ N ₃ O ₅
Molecular Weight:	481.5
Storage:	Powder: -20°C for 3 years In solvent: -80°C for 1 year Actual storage temperature shall be subject to the COA.



Biological Description

Description	Tetramethylrhodamine-6-maleimide, a sulfhydryl-specific fluorescent dye, covalently bonds with cysteine. This compound is utilized as a label for real-time detection of local protein movements in fully active Na ⁺ /K ⁺ -ATPase [1] [2].
Targets(IC50)	Others

Preparing Stock Solutions

	1mg	5mg	10mg
1 mM	2.0768 mL	10.3842 mL	20.7684 mL
5 mM	0.4154 mL	2.0768 mL	4.1537 mL
10 mM	0.2077 mL	1.0384 mL	2.0768 mL
50 mM	0.0415 mL	0.2077 mL	0.4154 mL

Please select the appropriate solvent to prepare the stock solution, according to the solubility of the product in different solvents. Please use it as soon as possible.

Note: The dilution table applies only to solid products. For liquid products, please calculate the stock solution based on the stated concentration and/or density.

Inhibitor · Natural Compounds · Compound Libraries · Recombinant Proteins

This product is for Research Use Only · Not for Human or Veterinary or Therapeutic Use

Tel: 781-999-4286 E_mail: info@targetmol.com Address: 34 Washington Street, Wellesley Hills, MA 02481