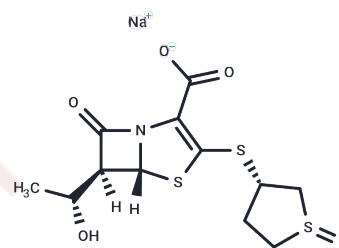


Sulopenem sodium

Chemical Properties

CAS No. :	112294-81-2
Formula:	C ₁₂ H ₁₄ NNaO ₅ S ₃
Molecular Weight:	371.43
Storage:	Powder: -20°C for 3 years In solvent: -80°C for 1 year Actual storage temperature shall be subject to the COA.



Biological Description

Description	Sulopenem (sodium) (CP-70429 (sodium)) is an orally active, parenteral penem antibiotic with broad-spectrum activity against Gram-positive and Gram-negative bacteria. It is potentially effective for treating urinary tract infections and intra-abdominal infections but is inactive against <i>Pseudomonas aeruginosa</i> and <i>Xanthomonas maltophilia</i> [1] [2] [3].
Targets(IC50)	Antibacterial, Antibiotic

Preparing Stock Solutions

	1mg	5mg	10mg
1 mM	2.6923 mL	13.4615 mL	26.923 mL
5 mM	0.5385 mL	2.6923 mL	5.3846 mL
10 mM	0.2692 mL	1.3461 mL	2.6923 mL
50 mM	0.0538 mL	0.2692 mL	0.5385 mL

Please select the appropriate solvent to prepare the stock solution, according to the solubility of the product in different solvents. Please use it as soon as possible.

Note: The dilution table applies only to solid products. For liquid products, please calculate the stock solution based on the stated concentration and/or density.

Inhibitor · Natural Compounds · Compound Libraries · Recombinant Proteins

This product is for Research Use Only · Not for Human or Veterinary or Therapeutic Use

Tel: 781-999-4286 E_mail: info@targetmol.com Address: 34 Washington Street, Wellesley Hills, MA 02481